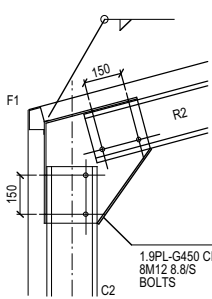
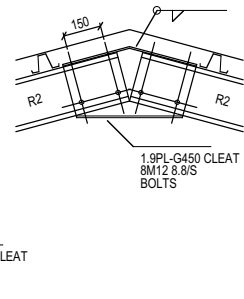


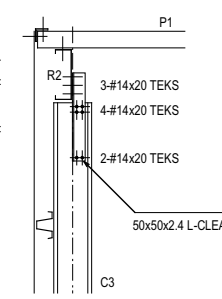
DETAIL D
1:20
C1,R1,KNEE CONN



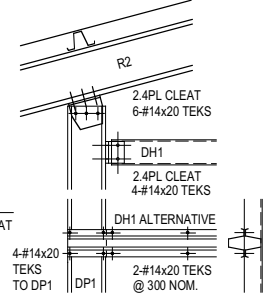
DETAIL H
1:20
R1,R1,APEX CONN



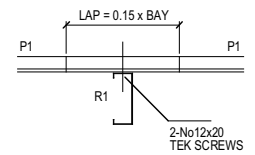
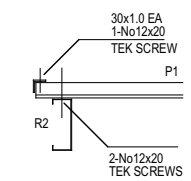
DETAIL F
1:20
C2,R2,KNEE CONN



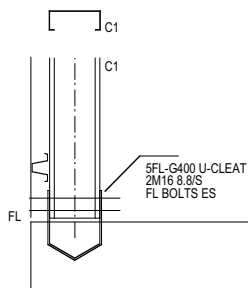
DETAIL I
1:20
C3,R2



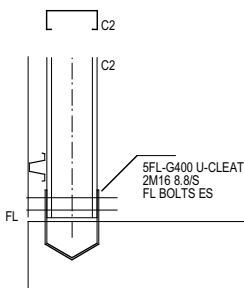
DETAIL K
1:20
R2,DP1,DH1



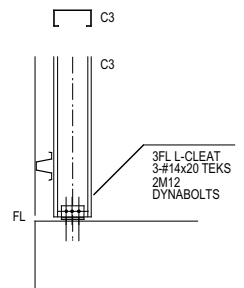
DETAIL P1
1:20
P1,R1



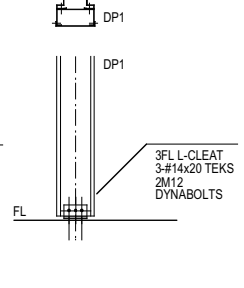
DETAIL E
1:20
C1 BASE



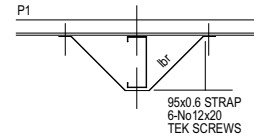
DETAIL G
1:20
C2 BASE



DETAIL J
1:20
C3 BASE

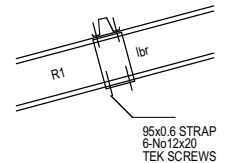


DETAIL L
1:20
DP1 BASE

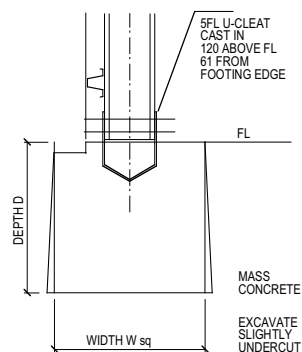


DETAIL M
1:20
R1,P1,ibr
C1,G1,ibr SIMILAR

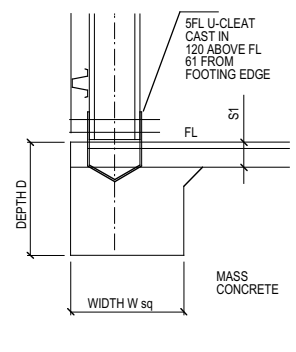
15° ROOF SLOPE SHOWN
10°, 20°, 27.5° SIMILAR



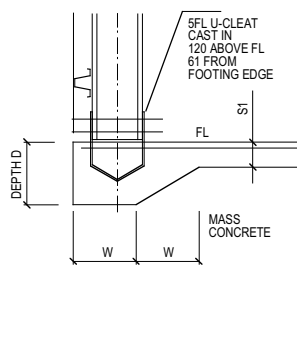
DETAIL N
1:20
R1,P1,ibr
C1,G1,ibr SIMILAR



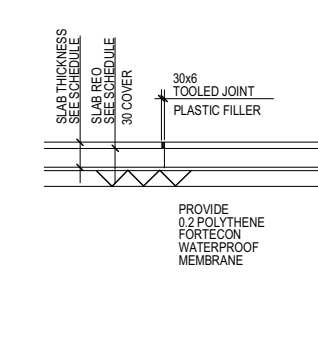
DETAIL A
1:20
PAD FOOTING
PF1-PF3



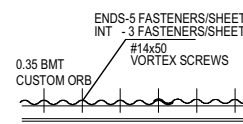
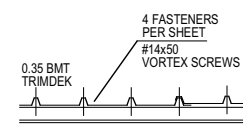
DETAIL B
1:20
SLAB FOOTING
SF1-SF3



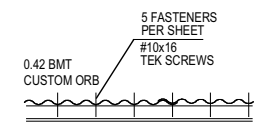
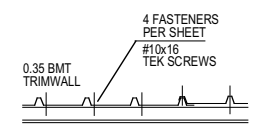
DETAIL C
1:20
BEAM FOOTING
BF1



DETAIL S1
1:20
S1/CONTROL JOINT A



DETAIL R1
1:25
ROOF CLADDING
SHEAR DIAPHRAGM



DETAIL R1
1:25
WALL CLADDING
SHEAR DIAPHRAGM



LYSAGHT BUILDING SOLUTIONS PTY LTD
trading as
RANBUILD
Copyright 2005

DATE	REVISION

D & S ENGINEERING PTY LTD
CONSULTANT CIVIL ENGINEER
40 Valetta Street Ph: 07 3396 1812
MANLY QLD 4179 Fax: 073393 4571

WE, D & S ENGINEERING PTY LTD, BEING CONSULTING STRUCTURAL ENGINEERS WITHIN THE MEANING OF THE BUILDING CODE OF AUSTRALIA, CERTIFY THAT WE HAVE CARRIED OUT A STRUCTURAL ANALYSIS FOR THE BUILDINGS DETAILED ON THIS DRAWING. THE STRUCTURAL ANALYSIS HAS BEEN CARRIED OUT IN ACCORDANCE WITH THE RELEVANT SAA CODES AND IN ACCORDANCE WITH ACCEPTED ENGINEERING PRACTICE AND PRINCIPLES. Sep 2005

David Richards
David Richards TAS: CC2774 T,
CPEng, RPEQ 2234, RBP EC-17786.
D & S ENGINEERING PTY LTD

DRAWING: SUNDOWN DELUXE GARAGE FULLY ENCLOSED REGION A - EXPOSED SUBURBAN AREA
DRAWING NUMBER: **SD/E-V41N-ES**